



GPS Tracker

SWTRACK1

Information For Use



Manual Contents

Intention For Use	4
Product Elements	4
GPS Tracker Components	5
LED Indicator Definitions	5
<i>GPRS LED Indication (Green LED)</i>	5
<i>GPS/Battery Level (Blue/RED LED)</i>	5
Installing the SIM Card	6
<i>Using The 1P Mobile SIM</i>	7
SMS Tracking Set Up	7
Using The TKStar GPS Smartphone App	9
<i>Configuring the APN Settings</i>	9
<i>Search For Your Network's APN Info</i>	10
<i>Syncing the APN Information To The GPS Tracker</i>	10
<i>Logging Into The TKStar GPS Application</i>	12
<i>TKStar GPS Features</i>	14
<i>Real-Time Live Tracking</i>	14
<i>Geofence</i>	14
Powering the GPS Tracker	16
<i>Rechargeable Battery</i>	16
<i>Hardwiring the Tracker to Your Vehicle's Battery</i>	16

SMS Commands	19
<i>SMS Tracking</i>	19
<i>Assigning Administrator (Setting an Authorised Number)</i>	19
<i>Movement Activated</i>	19
<i>Setting the Time Zone</i>	20
<i>Resetting The Device</i>	20
Using the GPS Tracker's SOS Feature	21
<i>Assigning an SOS Contact</i>	21
<i>Using the SOS Feature</i>	21
Troubleshooting	22
Hard Resetting	22
Product / Technical Support	23
SMS Command Glossary	24
Technical Specification	25
Declarations of Conformity	26-27

Intention For Use

Thank you for purchasing the Streetwize GPS Tracker. This product is intended to help you track the location of your vehicle, which includes cars, motorcycles, caravans and vans directly to your smartphone. It is ideal for helping you track and find your vehicle if your vehicle is lost or stolen.

The device can also be used for tracking the location of children & pets and it can also be used by companies with small fleets and as well as one van businesses.

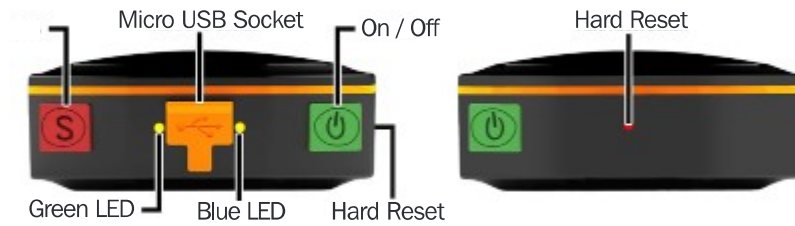
To get best use of this GPS tracker, we advise that you read all the information in this document.

Product Elements

1. Streetwize GPS Tracker
2. USB Charging Cable
3. USB 12V Battery Connector Cable
4. 1P Mobile Data-Enabled SIM Card
5. Screwdriver
6. Carry pouch



GPS Tracker Components



On / Off Button

Turns GPS Tracker on / off.

SOS Button

Send an emergency SOS message to your assigned emergency contact. See 'Using the GPS Tracker's SOS Feature' for more info.

Micro USB Socket

For connecting the supplied 5V USB cable for charging the device. And for connecting the supplied 12V USB battery connector cable.

Hard Reset Button

Resets the device back to its original settings. See 'Hard Resetting'.

LED Indicator Definitions

GPRS LED Indication (Green LED)

LED Light	Meaning
Flashing Green	GPRS is active.
Static Green	Device is looking for a GPRS signal.

GPS / Battery Level (Blue / Red LED)

LED Light	Meaning
Static Blue	Device is searching for a GPS signal.
Intermittent Blue	Device has GPS signal.
Static Red	Device is charging.
Red Light Off	Fully Charged

Installing The Sim Card

This device comes supplied with a 1P Mobile data-enabled SIM that is currently eligible to work in over 46 countries (excluding ROI). Please see 1P Mobile website for a full list of eligible countries.

This tracker comes with the APN settings pre-set for 1p mobile sim

If you decide to use another SIM, you need to set up the APN settings (see [Configuring APN Settings](#)).

Important: Prior to installing the SIM, please charge the GPS Tracker for 1 hour and ensure you take note of the supplied SIM's mobile number found on the SIM's packaging (see figure1).

For all queries in regards to 1pMobile SIM activation or top-ups please contact 1pMobile direct at www.1pmobile.com or on 033 3344 2278.

1. Remove the 4 screws from the back panel of the device using the provided screwdriver.
2. Gently slide the SIM card tray downward to unlock it. Then place the SIM card into the tray, with the gold chip facing downwards.
3. Once the SIM card is in place, slide the SIM card cover upwards and lock it into place.
4. Place the back panel onto the device and screw back the four screws that were previously removed.
5. Turn on your tracker by pressing and holding the green "On/Off" button until both LED indicator lights turn on.

The GPRS LED indicator should show a flashing Green light and the GPS/Battery LED indicator should show an intermittent Blue light. If the GPS/Battery LED indicator is showing a static blue light, then the device is not receiving a strong GPS signal. To resolve this, try moving to an open area so that it can receive a signal.



Figure 1

Using The 1P Mobile SIM

Your Streetwize GPS tracker has been pre-installed or supplied with a SIM card from 1pMobile, the UK's cheapest Pay As You Go mobile provider* The SIM is live and has a small amount of credit available for you to set up and configure your tracker.

To register your 1P Mobile SIM and top-up to add more credit as required for the tracker to function, go to the web address shown and follow the on-screen instructions. www.1pmobile.com/streetwize

The mobile number that you are asked to insert on screen is printed on the attached SIM carrier (see figure 1). Please keep this SIM carrier in a safe place for future reference.

SIM must be topped up with £10 every 120 days. (8.2p per day) OR £30 to keep the SIM activated for 12 months.

Heavy use may require additional top up. Auto top up available.

Balance check available by checking online at www.1pmobile.com

**correct according to 1p Mobile at time of printing*

SMS Tracking Set Up

Before using the device to track location directly onto your smartphone via SMS. You first need to assign your smartphone's number as the main admin. For this, you will need the following information (please complete the table below for reference):

Tracker's Mobile (A):	
Your Smartphone Device's Mobile (B):	

Feel free to use the above table to make note of the tracker's number and your smartphone's number.

The SIM card's number is found on the packaging (see Figure 1).

Please follow the instructions below to set your smartphone's number as the admin.

1. Save the Tracker's mobile to your phone's contact.
2. Then, send the following command from your smartphone:
Admin123456 [Your Mobile Number B] * **see overleaf & page 24**

Note: the '123456' is the device's PIN code.

3. The Tracker should respond by saying:

'admin ok'

4. As default, this GPS Tracker is set to Movement Activated, which means this device will automatically turn off when the vehicle is stationary for 5 minutes and it will go into Sleep mode.

When the GPS tracker begins to sense any movement, it will turn on. It will NOT send an SMS message to inform you that the tracker has sensed any movement.

If you want to enable the device to send SMS messages on sensing movement, send the SMS command 'shock123456' to the device. To disable this, send the SMS command 'noshock123456'.

If you'd like to turn off the default Movement Activated mode, send this command to the tracker.

'Sleep123456 off'

In the sending the above command, you should receive the following response:

'sleep off ok''

5. You're now ready to test the SMS tracking feature. To track the device to your smartphone, simply send the following command:

'G123456#'

In sending this command, you will receive an SMS message with a link to Google Maps that shows the tracker's location.

See Figure 1 for the screenshot of the SMS exchange between your phone and the tracker. Figure 2 shows the Google Map of the tracker's locations

*** for ALL SMS COMMAND settings on any feature of the tracker:**

Please do not include any brackets or letters.

Example command - Admin123456 07777888999

(so just admin code & number).

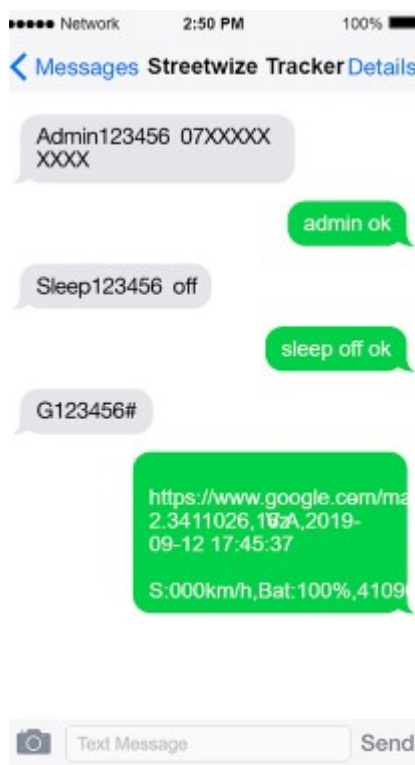


Figure 2

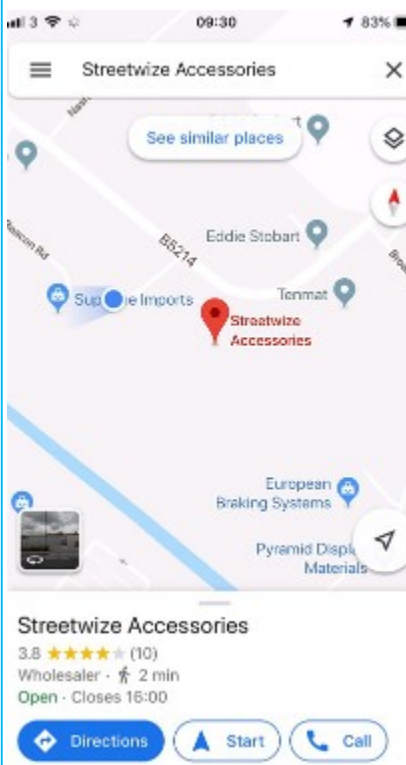


Figure 3

Setting The TKStar GPS Smartphone App

You can use the Streetwise GPS Tracker via the TKStar GPS smartphone app where you can access a whole host of features, in particularly the Real-Time location tracking and Geo-Fencing.

The TKStar GPS app can be downloaded from the Google Play Store or the Apple App Store.

Configuring the APN Settings

In order to use the TKStar GPS app, you need to configure the Access Point Name (APN), as this will allow the SIM card inside the tracker to use its data for live tracking.

To do this, you first have to search for your network's APN settings, then you need to sync this information to your GPS tracker.

Search For Your Network's APN Info

To set the APN, first you would need the following from your network provider*:

- APN address
- User info
- Password

You can obtain this information from a search engine like Google. All you need to do is type in the name of your network provider (e.g. 1P Mobile, O2, Vodafone, EE, GiffGaff, Sky Mobile) followed by 'APN settings'.

*This GPS tracker is not compatible with 3 network, please check with your SIM card provider to see which network is used

For example, to find the APN information for 1P Mobile, use the search term '1P mobile apn settings' as shown in Figure 4.

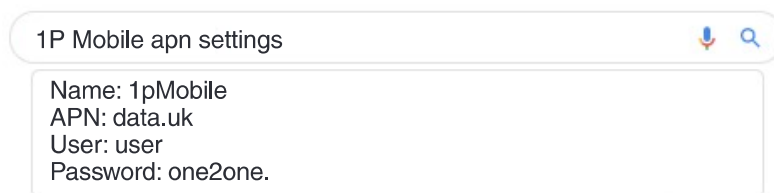


Figure 4

The same can be applied for O2 (Search 'O2 APN settings'), Vodafone (search 'Vodafone APN Setting'), EE (search 'EE APN settings') etc.

Syncing the APN Information To The GPS Tracker

Once you have obtained the APN information, now you need to sync this information to the GPS tracker. To do so, please follow the instructions below:

Please note, you would need to set the admin to your smartphone's mobile, as shown in the initial set up (see SMS Tracking Set Up), prior to configuring the APN settings.

1. Send SMS command:

'Apn123456 [APN of the network service provider for tracker's SIM]'

You should receive a response saying 'apn ok'.

2. Then, to sync the user info, send SMS command:

'Apnuser123456 [APN user of the network service provider for tracker's SIM]'

You should receive a response saying 'apnuser ok'.

3. Then enter the password by sending SMS command:
'Apnpasswd123456 [APN password of the network service provider for tracker's SIM]'

You should receive a response saying 'apnpasswd ok'.

Please note the spelling of password in the above SMS command.

4. Then, we need to ensure the GPRS is enabled so the SIM card inside the tracker can start to use its data. To enable GPRS, send the SMS command:

'GPRS123456'

You should receive a response saying 'gprs ok'.

To see these commands in action, see Figure 5 that shows the 1P Mobile APN settings being synced to the device. For this synchronisation, the following APN information was used:

- APN: data.uk
- User: user
- Password: one2one

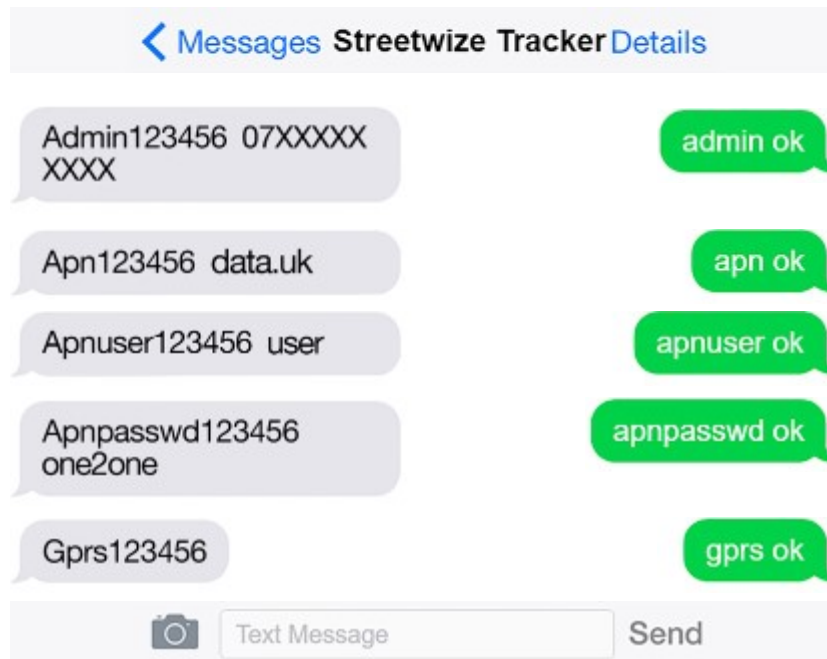


Figure 5
11

Logging Into The TKStar GPS Application

After installing the TKStar GPS app on your phone, open the app and select the option to log in with IMEI/ID. Here, you need to enter IMEI/ID, the server address and password.



For server address, change it to www.mytkstar.net. This ensures the app is signed into the same server as the tracker.



Then insert the password. The password for this tracker is set to 123456. This can be changed once you have logged in. When you have logged in, you will be taken to the Home Screen (see Figure 6).

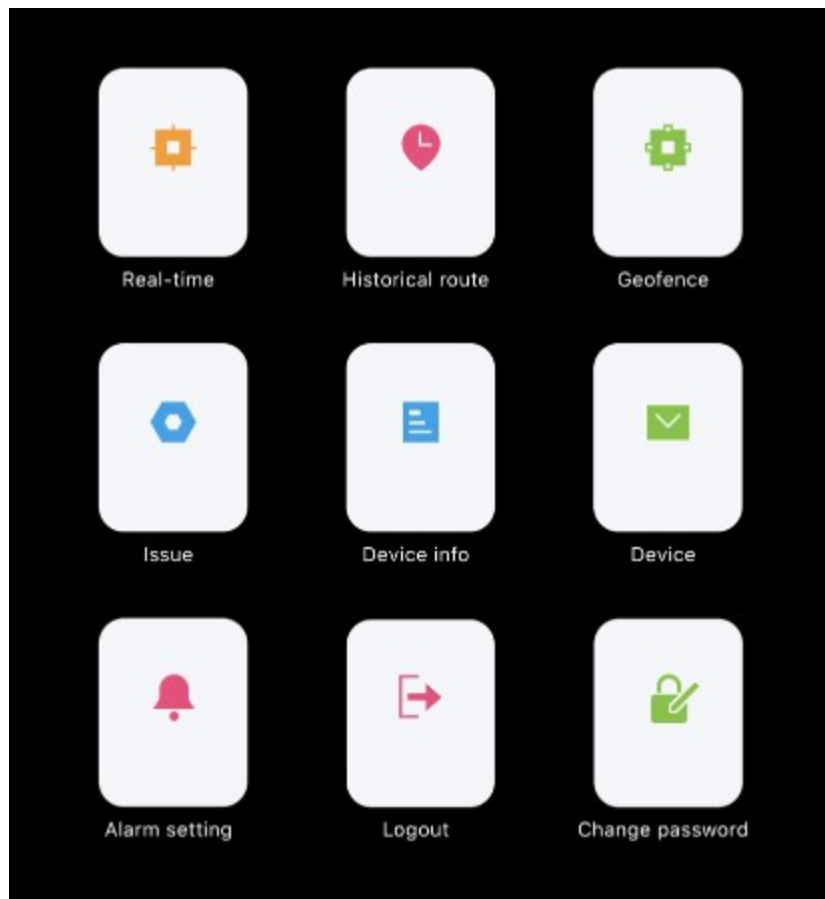


Figure 6
13

TKStar GPS Features

The TKStar GPS application comes with a host of features. In this section, we will be focusing on the Real-Time Tracking feature and the GeoFence feature as these are the primary functions.

If you like further information and support on how to use the app, please contact Streetwize's support team on support@streetwizeaccessories.com.

Real-Time Live Tracking

Through the TKStar GPS application, you can get an instant live location of the tracker's device. All you need to do is select the Real Time icon found on the top left of the home screen. And you will be shown a Google Map with the live location of the tracker.

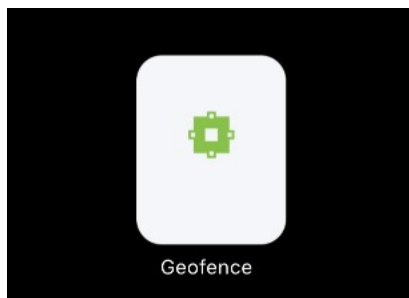
GeoFence

This feature, located on the top-right of the home screen, lets you set a geographical border that surrounds the Tracker's location. If the tracker leaves this geographical border (aka GeoFence), this will prompt the tracker to send a notification to the smartphone app.

This feature is ideal for use on caravans/motorhomes, small fleets, children & pets to make sure they stay within a designated area.

To set a GeoFence, follow the instructions below:

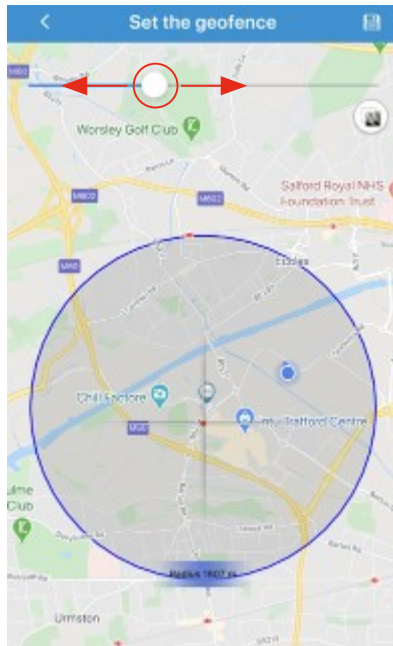
1. Select the GeoFence icon.
2. Tap the '+' symbol on the top-right of the screen.



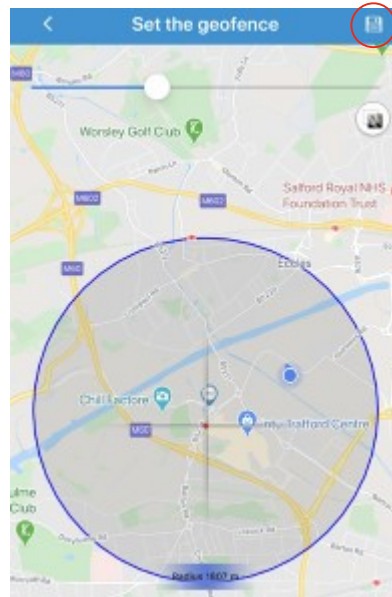
3. Assign a name for the GeoFence, and tap the 'Radius' box.



4. When tapping the 'Radius' box, you will be taken to a Google Map with the tracker's location. Adjust the slider to set the GeoFence's radius. You can also adjust the position of the GeoFence but ensure the tracker is within the radius.



5. Once radius is set, tap the 'Save' icon on the top-right of the screen.



6. You will now see the saved GeoFence.



If you want to delete a stored GeoFence, simply tap & hold on the saved GeoFence which prompts an option to confirm delete.

Powering the GPS Tracker

The GPS tracker can be powered via its built-in rechargeable battery or directly by your vehicle's battery. When battery level is below 20%, you will receive an SMS message indicating low battery.

Rechargeable Battery

To recharge the battery on the device, simply connect the device to a power source using the supplied 5V USB charging cable.

The battery life of the tracker will depend on if sleep mode is on or off. If the tracker is in sleep mode (only active when messaged or called) it will have a battery life of 72 hours. If sleep mode is off (constantly active), then the battery life will only be 12 hours.

Sleep Mode On
(72 Hours)



Sleep Mode Off
(12 Hours)



Hardwiring the Tracker to Your Vehicle's Battery

When hardwiring the tracker to your vehicle's battery, you must have sufficient mechanical knowledge/experience otherwise we advise that you get assistance from a competent professional.

To hardwire the device to your vehicle's battery, please follow the instructions below:

1. Before installing, your vehicle should be fully switched off.
2. Open your vehicle's bonnet and locate the battery compartment, removing any outer casing if there is one.
3. With a suitable socket wrench, remove the bolts that are connecting the vehicle's battery cable to the battery. Depending on the make and model, loosening of the bolts may disconnect the battery cables from the terminal (see Figure 7)



Figure 7

4. Get the supplied USB 12V battery connector cable. Remove the outer black cable casing up to the point where both connecting cables can connect to its respective battery terminal. To remove the outer black cable casing, use a pair of pliers (see Figure 8) and a Stanley knife (see Figure 9)



Figure 8

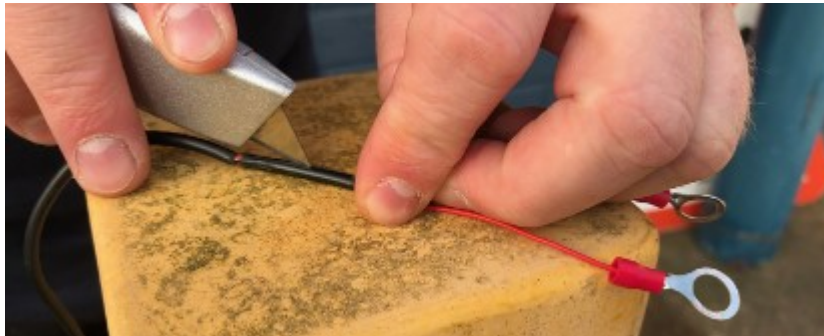


Figure 9

5. Then connect Tracker's connecting cables as shown in Figure 9. Then, secure the vehicle's battery cables back to its respective battery terminals.



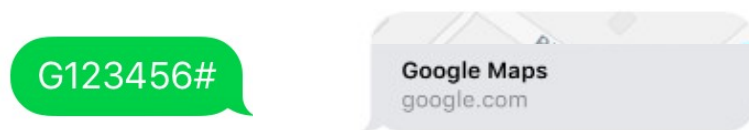
6. Once the connection to the vehicle's battery has been secured, connect the tracker to the other end (USB-end) of the cable.

7. To thread the device to your glovebox, you will need to follow guidance from your vehicle's manufacturer handbook as this will be different for each make and model.

SMS Commands

SMS Tracking

This command is for getting the location of the GPS tracker. Simply send the command 'G123456#' as an SMS message to the tracker. The response will contain a link to a Google Map of the tracker's location.



Assigning Administrator (Setting an Authorised Number)

This command enables you to set an authorised number as an administrator. This command is ideal if you now have a different number and you want to change the administrator.

Simply send 'Admin123456# [Your Mobile Number]' to the tracker. The response will be 'Admin ok'.



Movement Activated

This command allows the GPS Tracker to go into sleep mode and turn on when it senses any movement.

To use this feature, send an SMS message to the tracker with the command 'Sleep123456 shock'. You should receive a response saying 'Sleep Shock Ok'.

If you want to receive a SMS message whenever the device senses any movement, send the SMS command 'shock123456' to the device. This feature is ideal if you need to be alerted of any movement and/or possible theft of the vehicle. To disable this, send the SMS command 'noshock123456'.

Sleep123456 shock

Sleep shock ok

To turn off Movement Activated, send the command 'Sleep123456 off' to the GPS Tracker. You will receive a response saying "Sleep off ok" to confirm that movement activated feature has been turned off

Command:

Reply:

Sleep123456 off

Sleep off ok

Setting The Time Zone

This command is for when you are travelling abroad with this GPS Tracker and you want to get a timestamp of when you received the message based on your geographical location.

To set a time zone, simply send the command 'Timezone123456 [Timezone]'. For GMT, The Time Zone would be '0' as shown below:

Command:

Reply:

Timezone123456 0

Time ok

When you set the Time Zone, you will receive a response saying 'Time ok'.

For Time Zones East of GMT (Europe/Asia), simply type in the Time Zone e.g. 1, 2, 3 etc.

As for Time Zones West of GMT (North/South America), add '-' in front of the Time Zone e.g. -1, -2, -3 etc.

Resetting The Device

In case of an error during the initial setup or you are experiencing an issue, you can reset the device by sending the command 'Begin123456'. You should receive a response saying 'Begin ok'.

Begin123456

Begin ok

When you soft reset the device, you will have to go through the initial set up again.

Using the GPS Tracker's SOS Feature

This GPS Tracker comes with an SOS feature that allows you to send an alert message to an assigned contact asking for help.

This feature is suitable for children or any other emergency situations.

Assigning An SOS Contact

To assign a contact as your SOS contact, send the following SMS command:

SOS123456 [number of contact]

You should receive a response saying 'sos number ok'.

Command:

Reply:

SOS123456 07XXXXXXXXXX

sos number ok

Using the SOS Feature

In an emergency situation and you need to send an SOS message, simply press and hold the RED SOS button for 3 seconds. This will send a 'Help Me' message along with a Google Maps' link of the tracker's location as shown below:

help me! <http://maps.google.com/maps?q=53.47174%2c-002.34140V:V,2020-09-14 13:22:36 S:000km/h,Bat:80%,4109172017>

Troubleshooting

Issue	Cause / Solution
Tracker Not Responding	<p>If the SIM card installed in the tracker is on a pay as you go plan, please ensure that it has sufficient credit on it.</p> <p>If the tracker is not responding to messages, please check that the phone number of the SIM card in the tracker is correct.</p> <p>Check battery level.</p>
Tracker not receiving GPS signal (solid blue light shown on GPS / Battery level LED indicator)	<p>If the blue light is lit solid, this means the tracker is not receiving GPS signal in its current location, this is often caused by trying to set up the tracker indoors.</p> <p>Check that the location you have chosen for the tracker is not obstructed too much for the tracker to receive a signal. Locations like these would be: inside the glove compartment, under the steering wheel or under a seat.</p>

Hard Resetting

In the unlikely event where you notice that your GPS Tracker is not functioning properly or is not receiving a GPS or GPRS signal, then there might be hardware issues. A hard reset may be required.

In order to hard reset the tracker, press the provided screwdriver into the reset button on the device (the small circular red button found on the side). Once the tracker has been hard reset, it will need to be turned back on and the initial set up will need to be repeated in order to use it.

Product / Technical Support

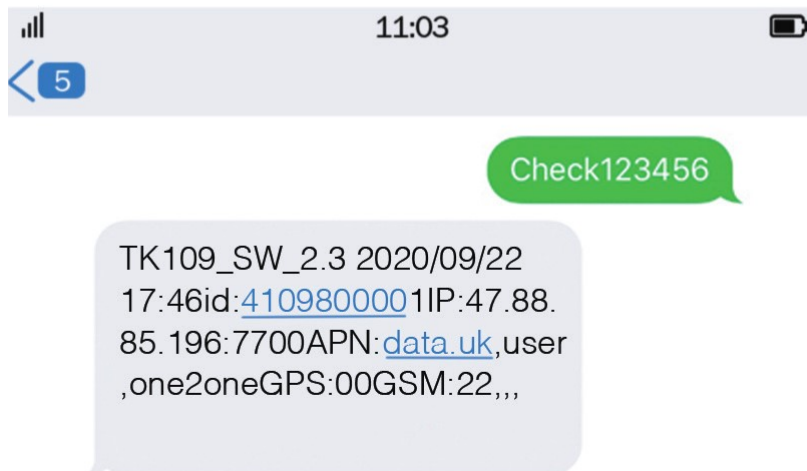
If you are experiencing any issues with setting up your tracker, then send the diagnostic check command "Check123456" to the tracker where you will then receive a diagnosis message from the tracker.

To get support, please screenshot this message, send it to our technical team on support@streetwizeaccessories.com with the subject line: SWTRACK1 Product Support. See example below.

Our technical team will look into it and provide you with a solution to your problem.

To: support@streetwizeaccessories.com
Subject: SWTRACK1 Product Support

Hi Product Support,
I have an issue with my tracker. Please find attached a screenshot of the diagnosis message from my tracker.



SMS Command Glossary

Issue	Cause / Solution
Tracker Not Responding	G123456#
Assign Administrator	Admin123456 [your mobile number]
Movement Activated	Sleep123456 shock
Sleep Mode Off	Sleep123456 off
Rebooting Device	Begin123456
Time Zone	Timezone123456 [timezone]
Assign SOS Contact	SOS123456 [number of contact]
APN	Apn123456 [APN of the network service provider for tracker's sim]
APN User	Apnuser123456 [APN user of the network service provider for tracker's sim]
APN Password	Apnpasswd123456 [APN password of the network service provider for tracker's sim]
GPRS On	gprs123456
GPRS Off	Nogprs123456
Diagnostic Check	Check123456

*** for ALL SMS COMMAND settings on any feature of the tracker:
Please do not include any brackets or letters.
Example command - Admin123456 07777888999
(so just admin code & number).**

Technical Specification

Technical Specification	
Input	DC 5V 1.0A
Battery	DC 3.7V 5000mAh
Pressure	86-106KPa
GPRS Class	12
Receive Frequency	1575MHz
Operating Temperature Range	-20°C to 45°C
Support Band	GSM 900 (EU Band), GSM 850 (U.S. Band), DCS 1800 (EU Band), PCS 1900 (U.S. Band)
Uplink	GSM 900: 880MHz ~ 915 MHz, DCS 1800: 1710MHz ~ 1785MHz
Downlink	GSM 900: 925MHz ~ 960MHz, DCS 1800: 1805MHz ~ 1880MHz
Maximum Power Output	GSM900: 32.5dBm PCS1800: 29.54dBm

Declaration of Conformity



Product: GPS Tracker

Model No: SWTRACK1

Manufacturer: The Ace Supply Company Ltd T/A Streetwize Accessories

Address: Unit 1, Royce Trading Estate, Ashburton Road West, Trafford Park, Manchester M17 1RY

EU Authorized Representative: Ace Supply Co (Europe) Ltd.

Address: 25 Herbert Place, Dublin 2. D02 A098

This declaration is issued under the sole responsibility of the manufacturer.

The object of the declaration described above is in conformity with the relevant UK Statutory Instruments (and their amendments)

2017 No. 1206 The Radio Equipment Regulations 2017

2016 No. 1091 The Electromagnetic Compatibility Regulations 2016

2012 No. 3032 The Restriction of the Use of Certain Hazardous Substances in Electrical and Electronic Equipment Regulations 2012

Conformity is shown by compliance with the applicable requirements of the following standards

EN 301-511 V12.5.1 (2017)

EN 303-413 V1.1.1)

BS EN 55032:2015:2013

BS EN 55024:2010+A1:2015

BS EN 61000-3-2:2014

BS EN 61000-3-3:2013

BS EN 60950-1:2006+A11:2009+A1:2010+A12:2011:+A2:2013

Signed for and on behalf of: The Ace Supply Company Ltd T/A Streetwize

Accessories Place of Issue: Manchester

Date of Issue: 19/10/2020

Name: Lesley Cooper

Position: QC Manager

Signature:

A handwritten signature in black ink, appearing to be 'L Cooper', written over a horizontal line.

EU Declaration of Conformity



Product: GPS Tracker

Model No: SWTRACK1

Manufacturer: The Ace Supply Company Ltd T/A Streetwize Accessories

Address: Unit 1, Royce Trading Estate, Ashburton Road West, Trafford Park, Manchester M17 1RY

EU Authorized Representative: Ace Supply Co (Europe) Ltd.

Address: 25 Herbert Place, Dublin 2. D02 A098

This declaration is issued under the sole responsibility of the manufacturer.

The object of the declaration described above is in conformity with the relevant EC Directives:

2014/53/EU RE Directive

2014/30/EC EMC Directive

2011/65/EU RoHS Directive

Conformity is shown by compliance with the applicable requirements of the following standards

EN 301-511 V12.5.1 (2017)

EN 303-413 V1.1.1)

EN 55032:2015:2013

EN 55024:2010+A1:2015

EN 61000-3-2:2014

EN 61000-3-3:2013

EN 60950-1:2006+A11:2009+A1:2010+A12:2011:+A2:2013

Signed for and on behalf of: The Ace Supply Company Ltd T/A Streetwize

Accessories Place of Issue: Manchester

Date of Issue: 19/10/2020

Name: Lesley Cooper

Position: QC Manager

Signature:

To view this manual online please
scan QR code or visit below URL



cutt.ly/SWTRACK1_Manual

Streetwize: Ashburton Road West, Trafford Park, Manchester, M17 1RY

For Product Support:

E: support@streetwizeaccessories.com

T: +44 (0)161 447 8597

For Trade Enquiries:

E: sales@streetwizeaccessories.com

T: +44 (0)161 447 8580

www.streetwizeaccessories.com

EU Registered Address: Ace Supply Co (Europe) Ltd.
25 Herbert Place, Dublin 2, D02 A098 Republic of Ireland.